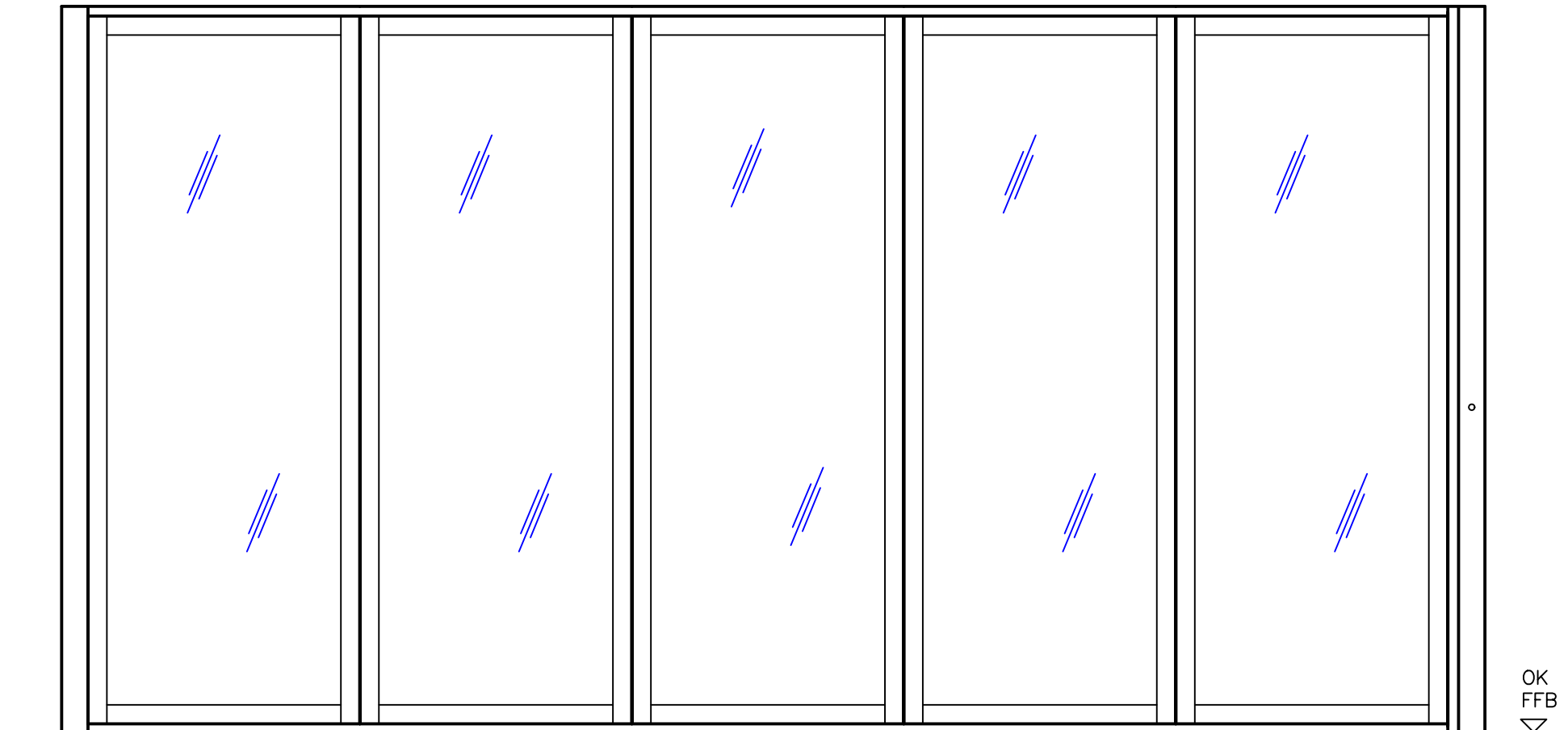
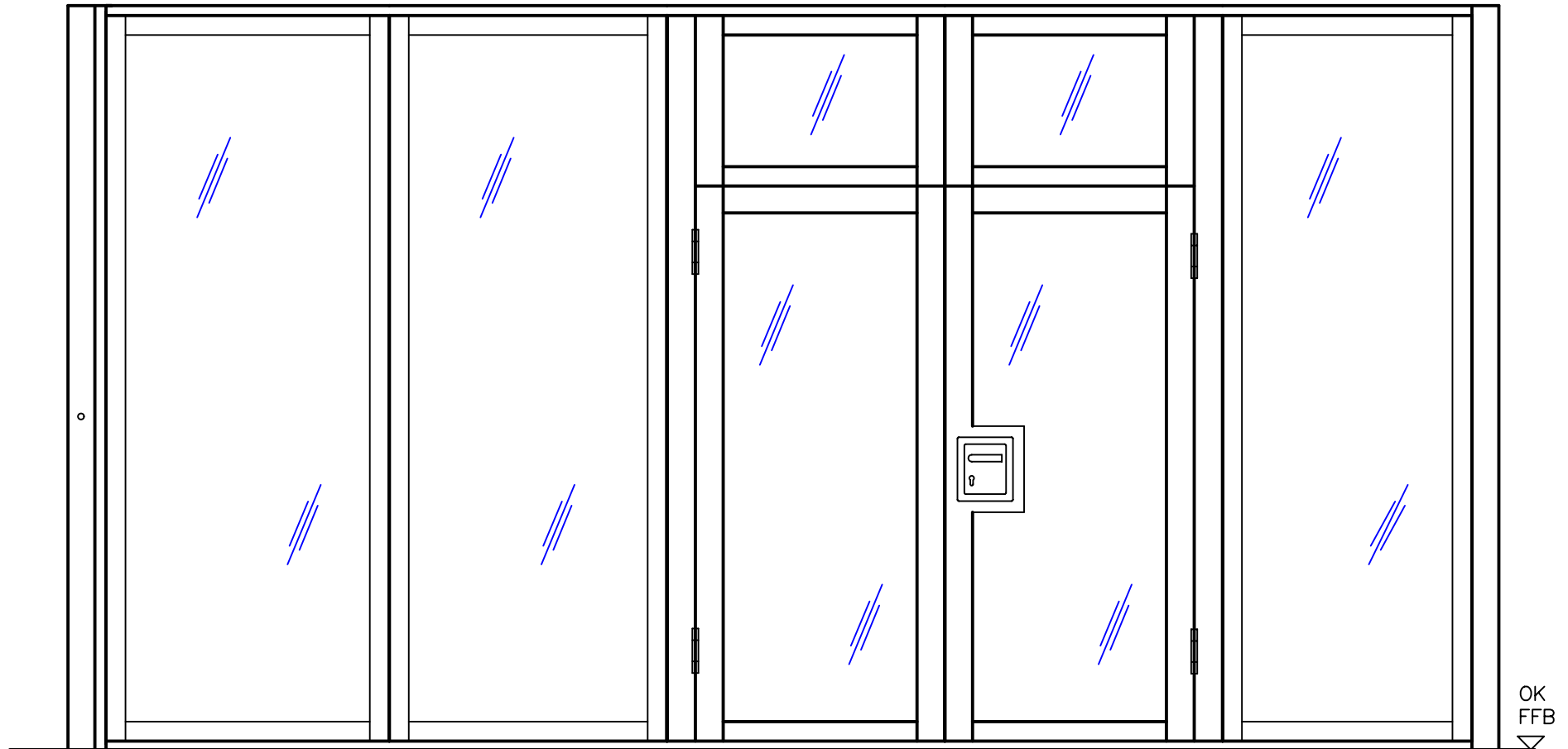


Wandansicht
Teleskopelement rechts



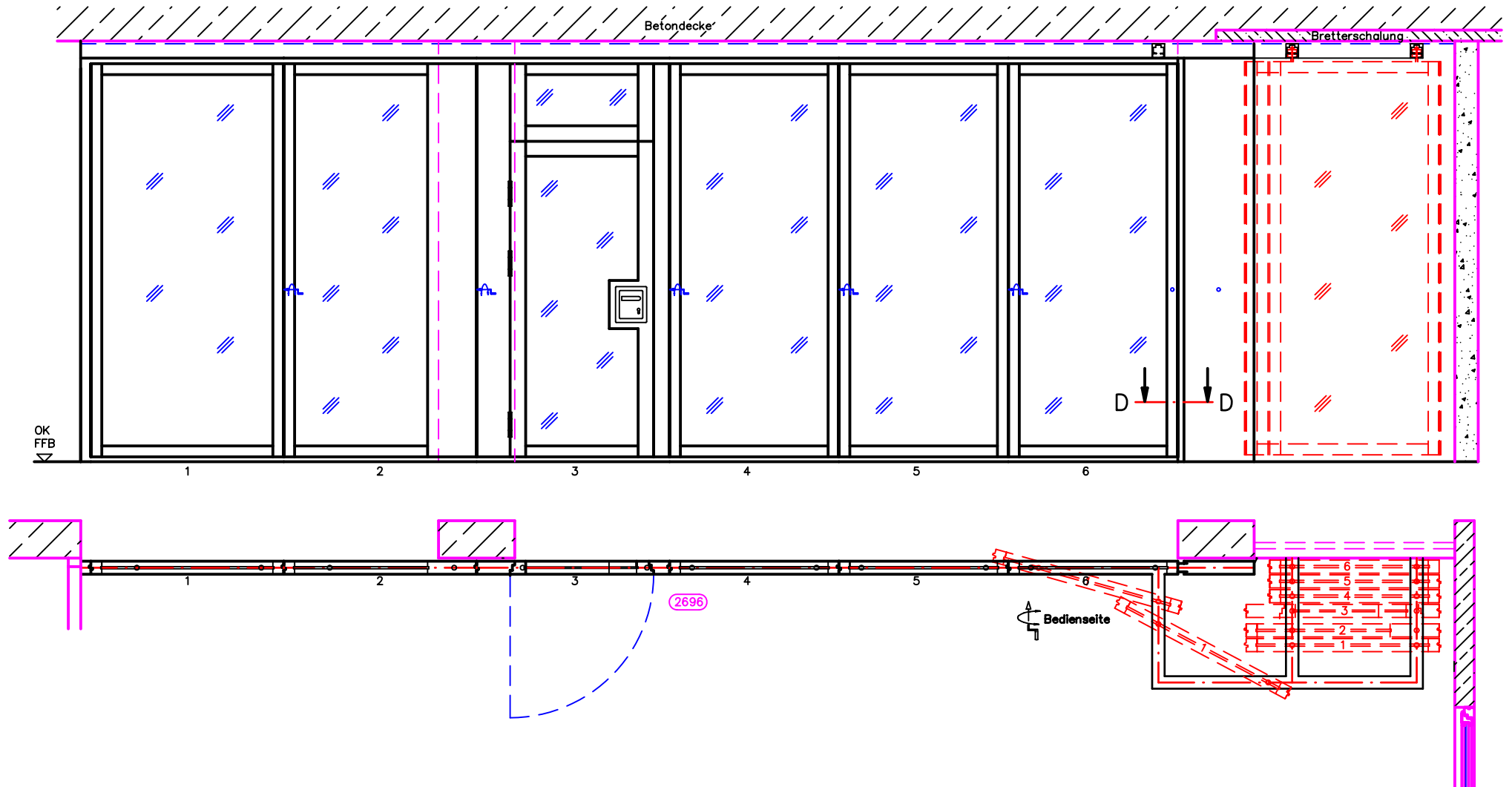
OK
FFB
▽

Wandansicht mit 2-flgl. D.-Türe
Teleskopelement links

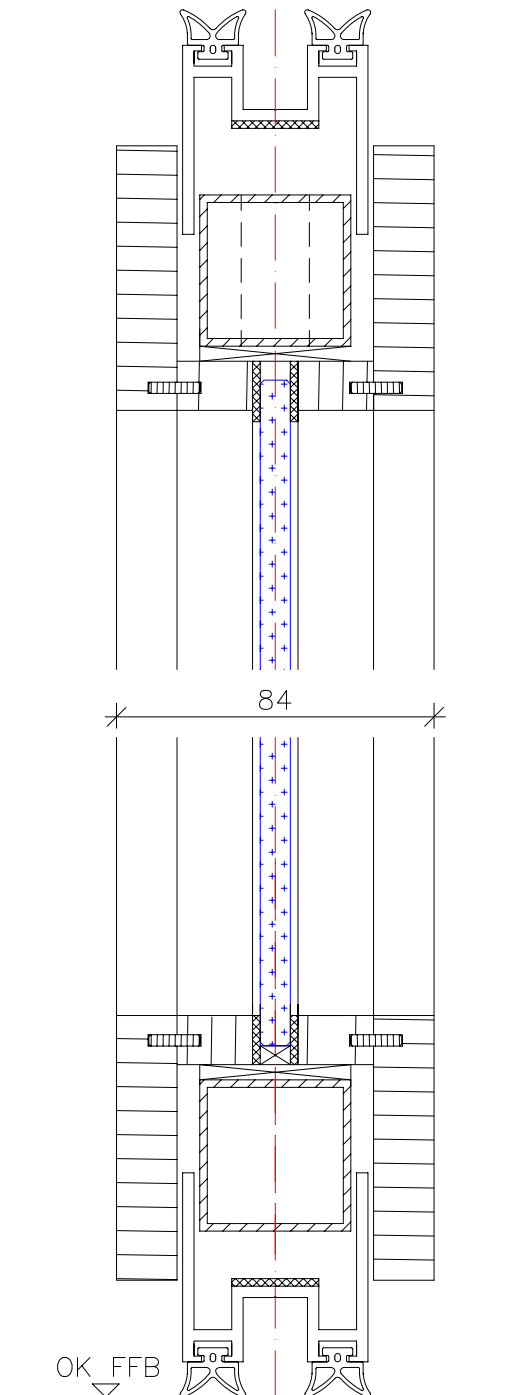


OK
FFB
▽

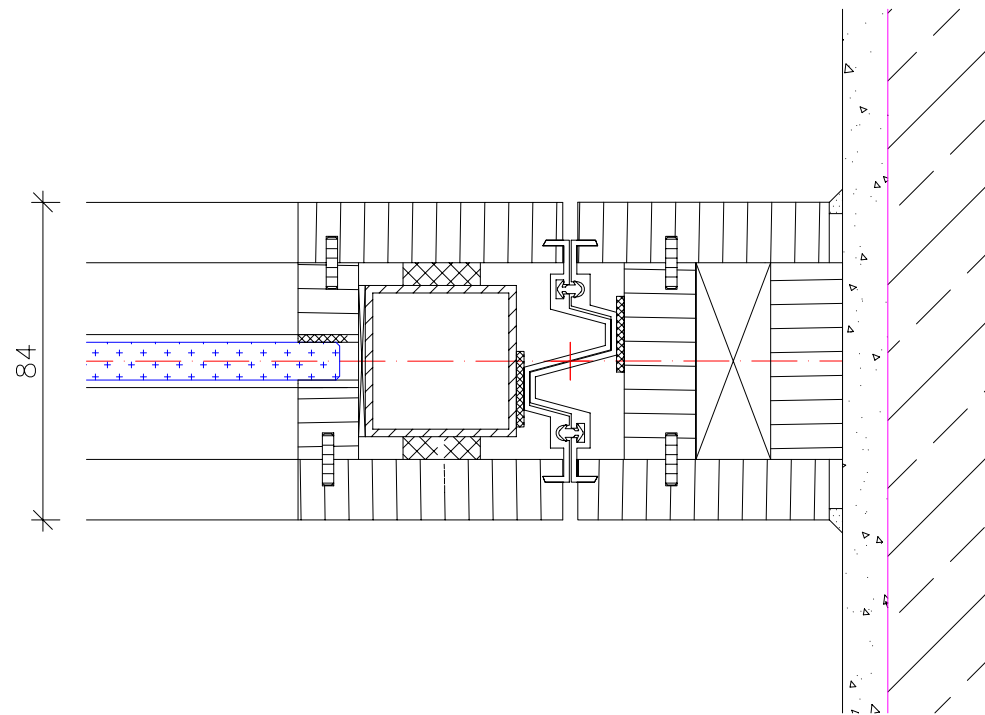
Praxisbeispiel



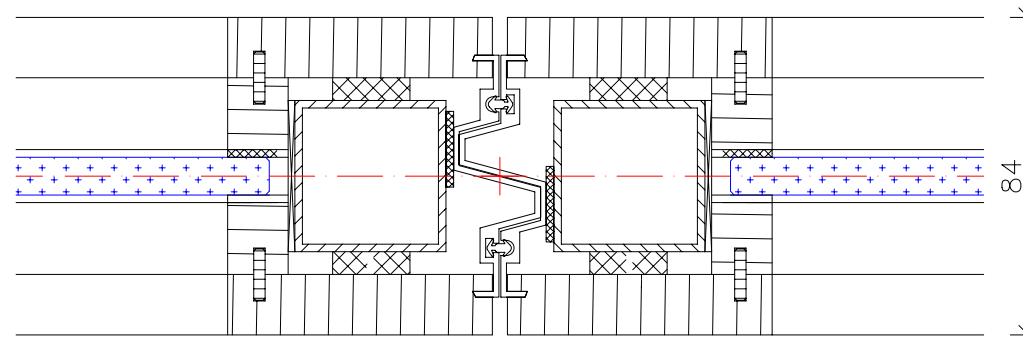
Vertikalschnitt Standardelement
M 1:2



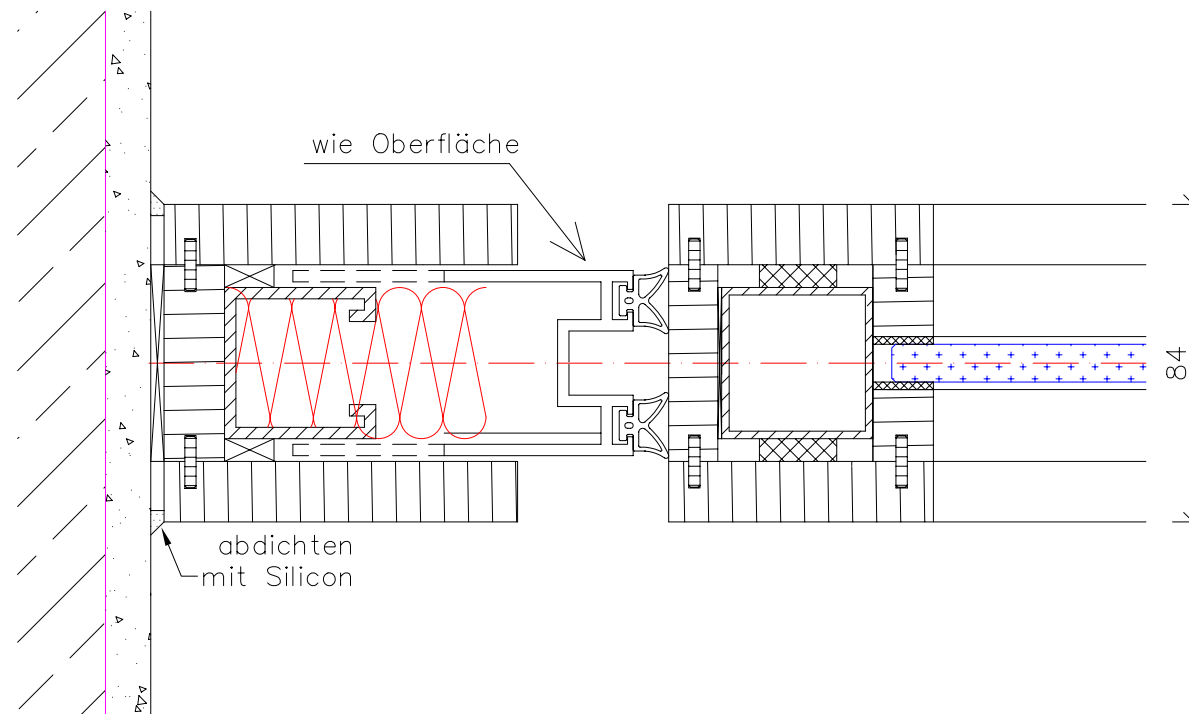
Horizontalschnitt Wandanschluss
M 1:2



Horizontalschnitt Elementstoss
M 1:2



Horizontalschnitt Teleelement
M 1:2



Vertikalschnitt Türelement
M 1:2

